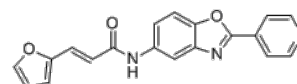


Product Name : SW157765
Cat. No. : PC-49286
CAS No. : 332063-87-3
Molecular Formula : C₁₉H₁₃N₃O₃
Molecular Weight : 331.33
Target : Glucose Transporter (GLUT)
Solubility : 10 mM in DMSO



Biological Activity

SW157765 (SW 157765) is a potent, specific inhibitor of glucose transporter **GLUT8** (SLC2A8) with K_d of 200 nM, shows sensitivity to KRAS/KEAP1 double mutant NSCLC cells.

SW157765 selectively inhibits fluorescent 2-deoxyglucose (2DG) uptake in SW157765-sensitive cells in a dose-dependent manner.

Copy number-driven amplification of PHGDH expression together with high expression of CYP4F11 significantly corresponded to SW157765 sensitivity.

References

Elizabeth A McMillan, et al. *Cell*. 2018 May 3;173(4):864-878.e29.

Caution: Product has not been fully validated for medical applications. Lab Use Only!

E-mail: tech@probechem.com